



TSIM INTERNACIONAL, S.A. DE C.V.



TSIM INTERNACIONAL is a company which specializes in providing the logistical services of Transloading, Warehousing and Transporting.

The company's headquarters are established in San Nicolás de Los Garza, Nuevo León, México, and it operates several Rail Terminals established throughout Monterrey and its metropolitan area, which are legally authorized by the Federal, State and Municipal Governments, and account with the necessary equipment and human resources to provide the logistical services. The main customers are steel industry - related, and are groups and companies which compete in today's highly globalized markets.

Member of the Transload Distribution Association since 2000: www.tdana.com



RAIL TERMINALS

- BODEGA NORTE (Escobedo, N.L.) KCSM**
- BODEGA EL CARMEN (El Carmen, N.L.) FXE**
- Vias Publicas KCSM (Monterrey, N.L.) KCSM**
- Ferropuerto del Golfo (Altamira, Tamps.) FXE**



BODEGA ESCOBEDO



*Carretera a Monclova, Km. 3.4, S/N
Escobedo, N.L., C.P. 66050*



BODEGA ESCOBEDO

Established in Escobedo, N.L. (approx. 10 miles North of Monterrey), this Rail Terminal offers a 780 yards Rail Spur, which is served by the **Kansas City Southern de México** RR, and which has a capacity for 30 Rail Spots. The railcars are switched daily from Monday – Saturday.

The Unloading/Loading service is provided by skilled personnel with the necessary Machinery, such as High Capacity Forklifts and Hydraulic Cranes .



BODEGA ESCOBEDO

STORAGE

This facility has the capacity to supply indoor and outdoor storage:
The buildings are 21 ft. high, with access doors of 16 ft. x 16 ft. The floor is prepared to support High Density products (specially steel products.)

INDOOR WAREHOUSE

34, 500 SQ. FT.



OUTDOOR WAREHOUSE

270,000 SQ. FT.



BODEGA EL CARMEN



*Carretera a Monclova, Km. 12.5, S/N
El Carmen, N.L., C.P. 66550*



BODEGA EL CARMEN

This Rail Terminal is located in the county of El Carmen, N.L. (15 miles North of Monterrey). It has a Rail Spur of approximately 550 yds., with a capacity for 25 Rail Spots. The railcars are switched daily from Monday – Saturday.

This Rail Terminal is served by **FERROCARRIL MEXICANO (FERROMEX) RR**

INDOOR WAREHOUSE

39,600 sq. ft.



OUTDOOR WAREHOUSE

1,000,000 sq. ft.



BODEGA EL CARMEN



VIAS PUBLICAS KCSM

TSIM also offers its services in the Public Rail Yard of the KCSM railroad (located near downtown Monterrey).

This installation offers an Indoor Warehouse with an area of 10,700 sq.ft., with the capacity for storing Low Density products.



Likewise, this Rail Terminal has the necessary skilled personnel and equipment to perform the transloading maneuvers.



NON-SERVED RR WAREHOUSES

TSIM also has an additional Indoor Warehouse with an area of 37,600 sq. ft., prepared to handle High Density products.



BODEGA 8

Alberto Escamilla No. 1800

Col. Andres Caballero

*Escobedo, N.L. (10 miles North
of Monterrey).*



ALTAMIRA RAIL TERMINAL



ALTAMIRA RAIL TERMINAL



ALTAMIRA RAIL TERMINAL

This installation has the following characteristics:

- The land plot is located in Altamira, Tamaulipas. It borders with the Industrial Maritime Port of Altamira, and is located ½ mile from the Port's entrance.
- The land has an area of approximately 22 acres.
- It's indoor and outdoor warehouse is prepared for handling High Density Products.
- Indoor Warehouse: 22,000 sq. ft.
- Outdoor Warehouse: 320,000 sq. ft.
- There is a rail spur with capacity for 120 rail cars spots.
- It is served by FERROMEX.

The objective of this rail terminal is to provide transloading services: Rail to Truck Loading/Unloading, Warehousing, and Trucking of import/export products which use the Maritime Port's installations and the Altamira, Cd. Madero, Tampico Industrial region.



ALTAMIRA RAIL TERMINAL



ALTAMIRA RAIL TERMINAL

Indoor Warehouse
22,300 Sq. Ft.



Outdoor Warehouse
645,800 Sq. Ft.



EQUIPMENT

FORKLIFTS

Quantity	Capacity
3	6,000 lbs
3	8,000 lbs
1	10,000 lbs
1	12,000 lbs
2	13,500 lbs
5	15,500 lbs
2	20,000 lbs
2	28,000 lbs
5	30,000 lbs
1	33,000 lbs
4	36,000 lbs
6	45,000 lbs
7	52,000 lbs
1	80,000 lbs
1	95,000 lbs



ATTACHMENTS

Concept

- Clamps
- Conveyors
- Venturi
- Forks
- Slings
- Magnet
- "C" Hook
- Ram Coils
- Spreader

Used For:

Paper Rolls
Industrial Powders
Plastic Pellets
Industrial
Industrial
Steel Slabs
Steel Coils
Steel Coils
TEU 20' & 40'



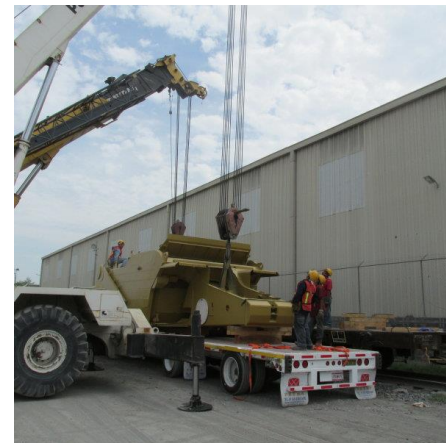
HYDRAULIC CRANES

Quantity	Capacity
1	18 Tons
1	35 Tons
1	45 Tons
3	50 Tons
1	55 Tons
1	65 Tons
1	80 Tons
5	90 Tons



Products Currently Handled

- **Ferrous Alloys:** Coils, Plates, Slabs, Pipes, Bars, Rebar, Rail Track, Wire Coils, “I”- Beams, Structural Steel, Scrap, etc.
- **Non – Ferrous Alloys:** Aluminum and Zinc Ingots.
- **Paper Products:** Rolls up to 60” in Diameter, Paper Waste/Scrap/Bales, etc.
- **Wood Products:** Plywood, Lumber, Board, etc.
- **Palletized Products.**
- **Products stored in Sacks and Supersacks.**
- **Industrial Machinery.**
- **Silica Sand.**



Railcar Types Currently Loaded/Unloaded

- Covered/Uncovered Gondolas.
- 50' – 60' High Cube Boxcars.
- Centerbeams.
- Flatcars.
- Rail Hoppers.



TRANSPORTATION

TSIM owns a fleet of more than 60 Truck Trailers, focused on the transportation in Monterrey and it's metropolitan area.

All of the units are equipped with:

- **Surveillance vía Cell Phone attended by an exclusive Monitoring Center.**
- **GPS System.**





As a Logistics Company, we can support in providing the necessary solutions to satisfy your Transloading, Warehousing and Transportation needs.

For additional information please contact:

Phone: +52 (81) 83 51 57 79
+52 (81) 83 51 91 34

Fax.: +52 (81) 83 51 14 44

www.tsim.com.mx

