



**Terminal Interior de Carga  
AL SERVICIO DE**



**Terminal Bajío**





## Terminal Bajío



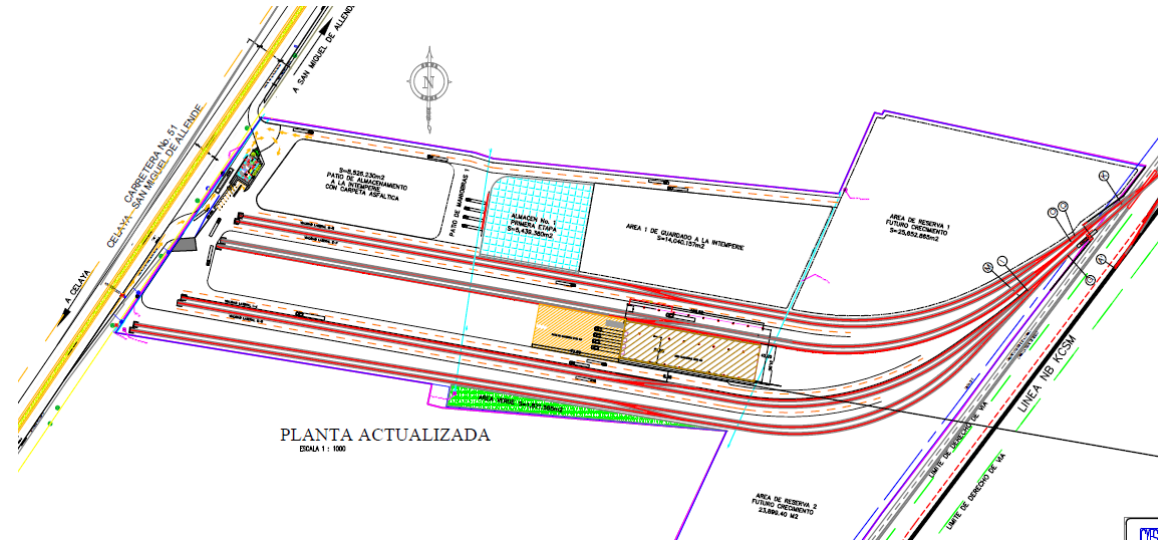
The SIP Bajío's load multimodal Terminal is exceptionally located in the industrial heart of México, with excellent rail and road connectivity to the main frontiers, strategic ports and in the geographic center, logistical and industrial of the country.





We have the infrastructure for the handling, loading, unloading and storage of big volumen of industrial materials, our multimodal rail terminal includes a platform that facilitates the efficient integration of several modes of transport, inventory management and optimization of logistics costs; it's a world class supply chain operational excellence mode.

## Terminal Bajío



The SIP Bajío load multimodal Terminal is a territorial extensión of 17 hectares, located in carr. Celaya – SMA, Km 12, eje de Gpe. y Soria, Soria por Empalme, Comonfort, Gto.



We offer services in the handling and storage of industrial loads by railroad track and land, always seeking to add value to the logistic strategy of each of our customers, reducing transfer costs and improving profitability and efficiency in the supply chain.







## Terminal Bajío

The SIP Bajío's load multimodal Terminal has two Integral Weighing Systems:

- Trucks scale with capacity of 90 Ton.
- Railway scale with capacity of 200 Ton.



Currently has 8 drownd-type railtrack with capacity of 240 Units.

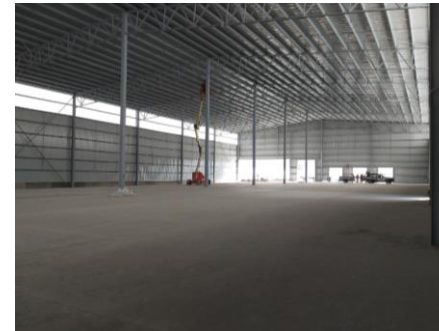


CCTV system monitored 24 hours with 39 strategically distributed cameras.

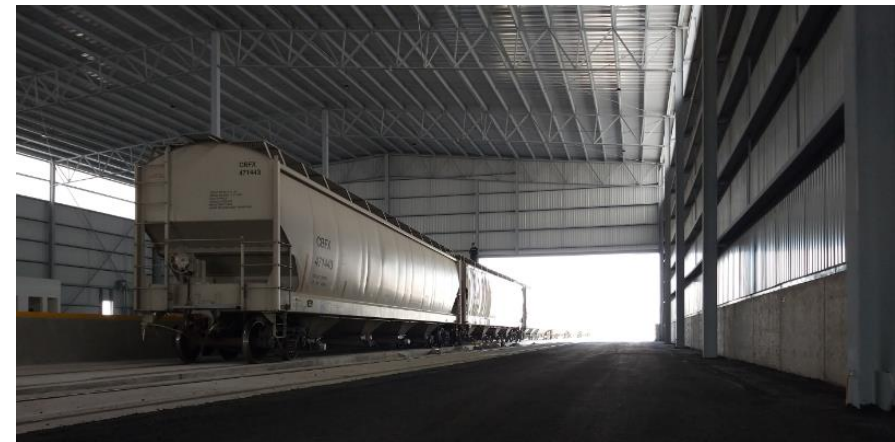




## Terminal Bajío



Inside the Terminal, we have a warehouse with 4200m<sup>2</sup> area with multiple and different loading and unloading access points to adapt in the best way to the different needs of the Client.







## Terminal Bajío



Carr. Celaya – SMA, Km 12, eje de Gpe. y Soria, Soria por Empalme, Comonfort, Gto.



<https://terminalsip.com/>



011 52 444 8701 550



[contacto@terminalsip.com](mailto:contacto@terminalsip.com)

